



2016-17 SEASON WELCOME

“A primary key to success at ANY level, in any practice is being honest while looking in the mirror.”

Dr. John Sterman, MIT

Welcome to our returning
every-growing membership
and to our newly enrolled staff



Agenda

- **Introductions and GGOB Organization -- Sonoma/Napa/Marin games**
- **Assignment process - tools and approach**
- **Training and Evaluation - tools, approach and our Observer staff**
- **Game Fees and Payment process - to be paid four (4) times in the season**
- **Association Administration - School Directory, Member info and Incident Reporting**
- **Wrap-up and Next Steps**



GGOB Organization Sonoma/Marin games

(growing # of Girls Frosh teams in Sonoma)



GGOB service areas include:

Location	Leagues/Schools	Levels/Team Counts
<ul style="list-style-type: none">Marin (one in Napa)	MCAL, San Domenico, Marin Academy, The Marin School, North Bay Christian Academy	<ul style="list-style-type: none">Most are FR, JV and Varsity Girls and Boys10 league teams and 4 others
<ul style="list-style-type: none">Sonoma	NBL and SCL	<ul style="list-style-type: none">8 - NBL teams (excluding Ukiah Home games)7 - SCL teamsFR, JV and Varsity Girls and BoysResurgence of Girls Frosh teams



Assignment process - tools and approach



Arbiter is the sole source

- | | |
|-------------------------------------------------------------------------------------------------------------------------------------------|---------------------------------------------------------------------------------------------------------------------------------------------------------------------------------------------------------------------|
| <ul style="list-style-type: none">• Game assignments | <ul style="list-style-type: none">• Teams, Levels, Dates and Partners• Continue successful expansion of Marin and NBL/SCL resource sharing |
| <ul style="list-style-type: none">• Calendar availability is key (especially if you work for more than one group!!!) | <ul style="list-style-type: none">• Need to keep maintained, all open slots and “turnbacks” reference this info strictly• DEMO after general session to manage this vital info |
| <ul style="list-style-type: none">• Pre Season Assigning First, then League | <ul style="list-style-type: none">• MCAL no longer to use “TBA” method• All other levels are typical |
| <ul style="list-style-type: none">• Pre-season in-progress | <ul style="list-style-type: none">• Waiting for complete school schedules |
| <ul style="list-style-type: none">• MCAL Assignors | <ul style="list-style-type: none">• Tim Dalton/Nancy Clary |
| <ul style="list-style-type: none">• NBL/SCL Assignor | <ul style="list-style-type: none">• Dominic Bosque |



Training and Evaluation – tools, approach and Observer staff



Training and Evaluation – critical success factor

<ul style="list-style-type: none">• Tools	<ul style="list-style-type: none">• CBOA Study Guides• Rules Tests• <i>In-season</i> video reviews/Quizzes• Study Guide session
<ul style="list-style-type: none">• Five (5) elements to determine quality of assignments and Play-off selection	<ul style="list-style-type: none">• Meeting Attendance• Study Group attendance• Test score/<i>In-season</i> Video results• Scrimmage attendance (2 required)• On-court Evaluations
<ul style="list-style-type: none">• Observer staff	<ul style="list-style-type: none">• Maintain significant Association investment• Veterans not working in our Group



Training and Evaluation

- Proud results of hard work



Play-off assignment results

- **League play-offs (all three leagues)**
- **22 games, 56 assignments, 36 different officials**
- **NCS Rounds**
- **52 Officials Nominated for NCS**
- **40 worked games, GGOB offered 28 games**

- **NorCal Rounds**

Nominated to officiate

Ryan Mathis	Dane DeMattei	Nancy Clary
Randy Rebarber	Dan Galvin	Ron Smith
TJ Murphy	Nate Rogoff	Adrian Reyes
Bear Whitfield	Eric Sit	Joe Harris
Dave Van hall	Veronica Bosque	Pete Knight
Dom Bosque	Jordan Ruiz	

- **State Finals**
- **Dave Cooley (Alternate)**



2016-17 NFHS BASKETBALL RULES AND EDITORIAL CHANGES

Plus Points of Emphasis and one little
leftover mechanics issue from last
year...

Rule 1-20- **NEW-** Non-playing peeps



- ❑ Non-playing personnel- such as cheerleaders, media, band, dancers, etc, **SHALL NOT** enter the playing area (the court) during 30 second or less time outs.
- ❑ Non-playing personnel **SHALL NOT** be in the area off the baseline “in the key” at any time during the game.
- ❑ Early/Prompt use of 30 second time out signal important.
- ❑ **Key point** - work with site administrators, coaches, cheerleaders and others from your first game on, to educate them on this rule change.
- ❑ No penalty (yet).

Rule 2-12-5- **NEW** - Timers Duties



- ▣ Sound warning horn *to start* the **15 second** maximum time period for a coach to replace a disqualified or injured player.
- ▣ Procedure (foul out)- when official has been notified of player disqualification, the calling or non-calling official shall: 1) Notify the affected coach; 2) Direct timer to sound horn and start timing a 15 second period, 3) Notify disqualified player; 4) the horn shall sound again to indicate the end of the 15 second period.

Rule 2-12-5- Timers Duties (cont)



- ▣ Procedure – (removed injured player)- Allow coach appropriate time to assist in examining and removing injured player. Once coach has reasonably completed this process; 1) Request a substitute from coach; 2) Direct Timer to sound horn and time 15 second period; 3) Horn shall sound at end of 15 second period.
- ▣ Key Point (for both sections)- NFHS feels these situations are taking too long. Don't allow the coach to get a “free” time out during these situations.

Rule 3-5 and 3-6

Edits - Uniforms



- ▣ A tee shirt may have a single logo as described in 3-6.
- ▣ 3-5-7 eliminated, and compression shorts rolled into 3-5-3, to simplify and align. Like sleeves, head bands and wrist bands, compression shorts, if worn, may be white, black, beige or the predominant color of the uniform, and any and all items worn must be the same color, across all members of the team.
- ▣ 3-5-3- Further definitions of a knee brace. Must provide stability to knee. Doesn't require metal or other hard components. Differences from a sleeve.

9-1-3h- **NEW** - FT Provisions



- ▣ Adds the provision that a player in a marked lane space may not step on or over the free throw lane into the semicircle, until the free throw touches the rim, or the free throw ends.
- ▣ 9-1-3f **EDIT**- Players not in marked lane spaces may not cross the free throw lane extended or 3 point line prior to the ball hitting the rim or the FT ending.
- ▣ Violation, delayed dead ball, reshoot free throw if missed (if non-shooting team violated). Immediate dead ball, if shooting team violates.
- ▣ Clarifies some issues from last year's rule changes.
- ▣ In both cases, removes (the ball) "striking the backboard" from the rule, as the ball striking the backboard doesn't end a FT.

9-1 Penalties 4b- **EDIT** - FT Provisions



- ❑ If the non-shooting team violates, it is a delayed dead ball.
- ❑ If the shooting team then violates, it is a double violation, and *both violations are penalized*.
- ❑ Ball is dead. No point can be scored. If there are subsequent free throws, they will be shot as normal. If there are no subsequent free throws, play is resumed by use of alternating possession arrow.

10-5-3 EDIT

Bench Tobacco Ban

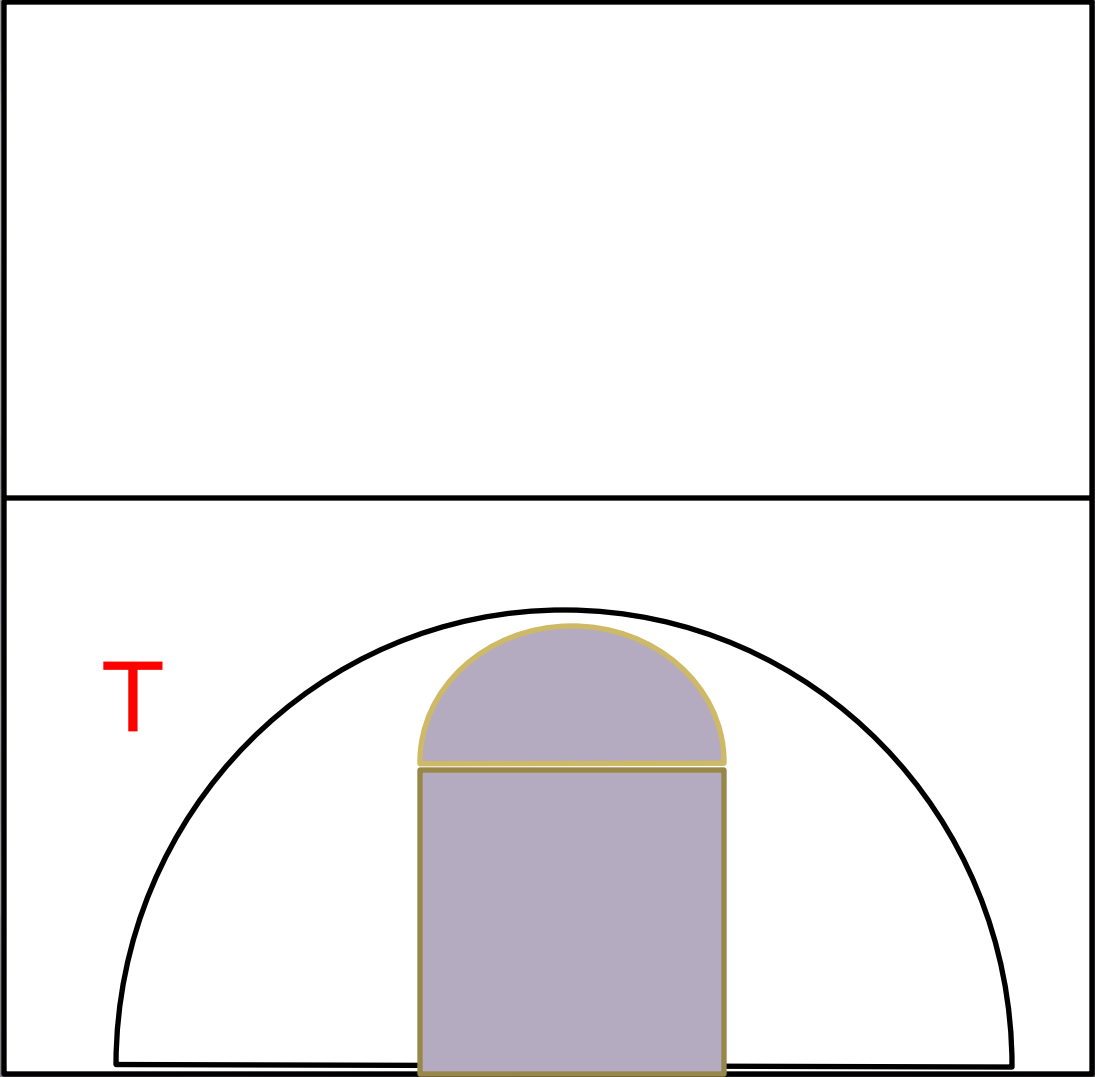


- ❑ Expanded to include e cigarettes, but left out...
- ❑ Medical Marijuana

Points of Emphasis



- ▣ Timeout criteria- coach request.
- ▣ Technical Fouls- re-organized section.
- ▣ Replacing injured or disqualified player
- ▣ Protecting the FT shooter- note violation/foul combo
- ▣ Post play



T

T
X

L

L

Training videos



Placeholder for videos coming from Bruce and TJ



Game Fees



Fees differ by League

- **NBL/SCL Game Fees**

(Foundation Day games
pay 50% slated for 11/22)

- Varsity = \$70 JV = \$60
- FROSH = \$58
- All NBL/SCL games are 8 minutes

- **MCAL Assignments**

- Varsity = \$70
- JV = \$63
- FROSH = \$58
- All non-Varsity games are 7 minutes

❖ **Note: NBL/SCL Fees are level for 4 years (1-year remaining)**



Payment process – pay four (4) times in the season (same as last three seasons)



Payment process overview

<ul style="list-style-type: none">• Frequency	<ul style="list-style-type: none">• Dec. 15th and 31st• Jan. 31st• Feb. 28th
<ul style="list-style-type: none">• Method	<ul style="list-style-type: none">• Hard-copy checks mailed to addresses in Arbiter and Bill Pay• Non-descript white envelope
<ul style="list-style-type: none">• Game details	<ul style="list-style-type: none">• Review Arbiter for game details that will reconcile to the game fee check amount• Any “Turn-back” fees will also be shown

- ❖ Form 1099's to be issued for all those earning over \$600 in 2016, mailed to Official in Feb/Mar 2017



Association Administration

- School Directory, Member info
and Incident Reporting



Administration framework - know these support tools

- ArbiterSports
- www.arbitersports.com

- Assignments and Game details
- Partners contact info
- Member info - phone, email, home address
- Video quiz and content review

- Local Association info and bulletins
- GGOB.net

- Membership and Board info
- School Directory
- Incident Report

- California Basketball Association
- www.CBOA.net

- Study materials
- Lesson Plans
- Certification Testing



Wrap-up and Next Steps



Thank you for your time, attention and passion

- | | |
|------------------------------------------------------------------------|-----------------------------------------------------------------------------------------------------------------------------------------------------------------------------------------|
| <ul style="list-style-type: none">• Any open questions? | <ul style="list-style-type: none">• Review ArbiterSports often• Availability accuracy is key• Get into the Rule Book |
| <ul style="list-style-type: none">• Study Guide meetings | <ul style="list-style-type: none">• To be held between weeks of 10/16-10/30• Host sites, dates and times TBA |
| <ul style="list-style-type: none">• Next formal meetings | <ul style="list-style-type: none">• Santa Rosa: 11/13 - 6:30-8:30pm @ Roseland School District office• Marin County: 11/14- 7:00-9:00pm @ Terra Linda HS Library |

