



# 2017-18 SEASON MEETING #3

*“It’s the little details that are vital. Little things make big things happen”*

*John Wooden*

# Extending our topics in preparation for starting our Season



## Agenda

- Quick status on Season preparation activities - scouting reports this will be a very different kind of year
- Assignment process - Scrimmages, pre-season and league games
- Training/Evaluation/Testing - topics, videos and testing
- Game Management principles and Coaches feedback
- Critical Success Factors (CSFs to reinforce and emphasize)
- Wrap-up and Next Steps



# Quick status on Season preparation activities



## Clear focus on servicing Officials, Coaches & AD's:

Activity	Purpose	Results
<ul style="list-style-type: none"><li>Multiple Small Group Study Group sessions held</li></ul>	<ul style="list-style-type: none"><li>Enhance rules knowledge</li><li>Fulfill certification training hours</li><li>Build strong organizational "sense" of commitment</li></ul>	<ul style="list-style-type: none"><li>Test preparation was solid</li><li>Well-attended and very interactive</li><li>"Approved" Hosts only</li><li>"Follow-the-rules"</li></ul>
<ul style="list-style-type: none"><li>Coaches Meeting for MCAL/NBL/SCL conducted</li><li>2 separate groups</li></ul>	<ul style="list-style-type: none"><li>Reinforcing positive relationship and mutual accountability</li><li>Rule enforcements and POEs - critical issue this year</li></ul>	<ul style="list-style-type: none"><li>All schools represented</li><li>New Bench warming process reviewed</li><li>Very alert to "next season" implications</li></ul>



# Assigning games status



## Three-track approach

- |  |   |
|--|---|
| <ul style="list-style-type: none"><li>• Self-assigning for Scrimmages</li></ul>  | <ul style="list-style-type: none"><li>• Please take as many scrimmages as possible, but no more than 2 at a single site</li><li>• Blocked dates are causing yourself problems</li></ul>       |
| <ul style="list-style-type: none"><li>• League Assignments</li></ul>   | <ul style="list-style-type: none"><li>• MCAL dates almost set</li><li>• Can review all slots at anytime</li><li>• Timely responses will help manage “turnbacks” and “reassignments”</li></ul> |
| <ul style="list-style-type: none"><li>• Pre-season assignments - delayed due to school submission and gym damage considerations in NBL/SCL</li></ul> | <ul style="list-style-type: none"><li>• More than 30 tournaments in both Counties</li><li>• See next chart for more details</li></ul>   |



# Assigning games status - NBL/SCL



## Schedule grid - availability and coordination keys

Assignment Phases -- NBL/SCL

Label	Game Counts	% of total pre-season
<b>Preseason</b>		
<i>Week 1/2 -- Preseason Nov 6-19</i>	21	4%
<i>Scrimmages</i>	53	9%
<i>Week 3 -- Preseason Nov 20 -- Nov 26</i>	50	9%
<i>Week 4 -- Preseason Nov 27 -- Dec 3</i>	117	20%
<i>Week 5 -- Preseason Dec 4 -- Dec 10</i>	156	27%
<i>Week 6 -- Preseason Dec 11 -- Dec 17</i>	64	11%
<i>Week 7 -- Preseason Dec 18 -- Dec 24</i> <i>* NBL League games on 12/22</i>	40	7%
<i>Week 8 -- Preseason Dec 25 -- Dec 31</i>	81	14%
<b>League</b>	<b>subtotal</b>	<b>582</b>
<i>League Week 1 -- Jan 1 - Jan 7</i>	80	15%
<i>League Week 2 -- Jan 8 - Jan 14</i>	115	21%
<i>League Week 3 -- Jan 15 - Jan 21</i>	89	17%
<i>League Week 4 -- Jan 22 - Jan 28</i>	86	16%
<i>League Week 5 -- Jan 29 - Feb 4</i>	94	18%
<i>League Week 6 -- Feb 5 - Feb 12</i>	73	14%
	<b>subtotal</b>	<b>537</b>

Almost 50% of entire pre-season is in this 2-week timespan

Please hold your 12/08-12/10 dates



# Assigning games status – NBL/SCL



**League dates that are extra heavy – due to NBL / SCL /MCAL Boys on same night**

Day of Week	Date	Leagues
Tues	Jan 9	NBL/SCL/MCAL
Sat	Jan 13	NBL/SCL/MCAL
Fri	Jan 26	NBL/SCL
Wed	Feb 8	NBL/SCL
Fri	Feb 10	NBL/SCL/MCAL

*Can you reserve these dates if possible?  
For Seven dates in Jan 9,11,13,16,18,24, 26  
BOTH NBL and SCL Boys games*





## CBOA Test A Most Missed Questions

12 Technical fouls include all but which of the following? (Rule Ref:(4-19-5, RBT p. 192-193))

- a) A noncontact foul by a player when the ball is live.
- b) A foul by a nonplayer.
- c) A contact foul when the ball is live.**
- d) A contact foul when the ball is dead, except a foul committed by an airborne shooter.



## CBOA Test A Most Missed Questions

27 Which are true of correcting bookkeeping or timing errors? (Rule Ref:(2-11-11, 5-10, RBT p. 278, 282-283))

- a) **A timing error must be corrected in the half or extra period in which it occurred, and; a bookkeeping mistake can be corrected at any time until the referee approves the final score.**
- b) A timing error can be corrected at any time until the referee approves the final score, and; a bookkeeping mistake must be corrected in the half or extra period in which it occurred.
- c) Both a and b.
- d) Neither a or b.





## CBOA Test A Most Missed Questions

32 Which are true of a passed ball? (Rule Ref:(4-6, 4-22, RBT 9.11.2C p. 152, RBT p. 149, 164))

- a) Goaltending can occur on a pass, and; goaltending can occur on a throw-in.
- b) Basket interference can occur on a pass, and; basket interference can occur on a throw-in.**
- c) Goaltending can occur on a throw-in.
- d) Neither a or b.



## CBOA Test A Most Missed Questions

53 A1 has a throw-in along the endline. A1 throws the ball inbounds, but no player touches the ball. A1 runs after the ball and is the first to touch it near the division line. What is the result?

- a) **Throw-in violation on A1. Endline throw-in for team B.**
- b) No violation. Play shall resume uninterrupted.
- c) Team B receives a throw-in nearest the spot where A1 touched the ball at the division line.
- d) None of the above.



## CBOA Test A Most Missed Questions

75 A double personal foul is ruled in the frontcourt near the sideline while A1's try for goal is in flight. The try is successful. Team A has the possession arrow. Where is the resulting throw-in and by which team?  
(Rule Ref:(4-36-2c, 7-5-3b, RBT p. 109-110, RBT 4.19.8E p. 197))

- a) A designated-spot throw-in for team A.
- b) A designated-spot throw-in for team B.
- c) A non-designated spot throw-in along the endline by team A.
- d) A non-designated spot throw-in along the endline by team B.**



## CBOA Test A Most Missed Questions

77 Team A's head coach, while within the coaching box, demonstratively waving his or her hands at an official in disgust over a play team A's coach thought should have been ruled a foul. No prior warnings have been issued. How should this situation be handed?

**a) A coach demonstratively waving his or her hands in disgust is a major violation of the rule and is a direct technical foul regardless of if a prior warning has been issued.**

b) An indirect technical foul should be issued to team A's coach.

c) Given this is the first minor offense, the officials should verbally warn team A's coach. Any second minor infraction should lead to the formal administrative warning being issued and recorded.

d) The official should stop play to have the scorer record a warning in the scorebook and then notify team A's head coach that he or she has been warned.



## CBOA Test A Most Missed Questions

83 When is the ball considered to be at disposal?

- a) A ball is at disposal of a thrower or free thrower when it is handed to a thrower or free thrower.
- b) A ball is at disposal of a player when it is caught after being bounced to him or her.
- c) A ball is at disposal of a player when it is placed on the floor at the spot.
- d) A ball is at disposal of a player when it is available after a goal and the official beings the throw-in count.
- e) All of the above.**



## CBOA Test A Most Missed Questions

85 Which of these results in a violation by team A during A1's designated-spot throw-in?

- a) A2, who is in team A's frontcourt, deflects the ball from the frontcourt to the backcourt, and then goes to the backcourt to gain control of the ball.
- b) A2 leaps from team A's frontcourt, catches the ball, and lands with both feet in team A's backcourt.
- c) A2 leaps from team A's frontcourt, catches the ball, lands with one foot in team A's frontcourt, and then A2's second foot lands in team A's backcourt.
- d) No violation as all are legal plays.**



## CBOA Test A Most Missed Questions

98 A1 is in the frontcourt and attempts a two-point try. During the attempt, A3 and B4 are ruled for a double foul in the area near the key by team A's basket. How is play resumed and is the shot clock reset? (Rule Ref:(6-7 Exception a, 7-5-3b))

- a) The double foul causes the ball to be dead.
- b) The shot clock shall be reset if the shot contacts the ring.
- c) Two points shall be awarded to team A if the try is successful.
- d) Both b and c.**



## Quick Review of New Rules

- **Bench Conduct Warnings**
  - One for bench/coach unsportsmanlike behavior
  - One for coaching box violations
  - Determine tolerance levels and use cases
  - Warning not a necessary interim step to technical foul (if warranted)
- **Coaching Box Extension**
  - now 28 foot line to endline
- **2 Hand Foul Reporting**
  - Right hand = tens; Left hand = ones
  - Report with full number (thirty-one), not digits (three one)





# Training/Evaluation/Testing



## Points of Emphasis Topics (POEs)

- **Head Coverings**
  - safety considerations still in place
  - report any non-compliance, ask for the NCS Notice
- **“Body Bumping”**
  - the next frontier on the freedom of movement evolution
- **Team Control/Throw Ins**
  - will be covered later
  - only for purposes of foul against inbound team
  - no counts or violations in play during throw in
- **Intentional Fouls**
  - enforce swiftly on “non-basketball” plays (help to upgrade?)
  - “sell” the call and make it clear to teams/crew
  - evaluators will be paying close attention to these plays



## Inbounding Review (Defensive Team)

### 3 Types of Defender Violations/Fouls

- 1) Defender reaching through the plane
  - Delay of Game Warning 1<sup>st</sup> time; Technical on any subsequent violation (or if plane violation is the 2<sup>nd</sup> delay violation)
- 2) Defender contacting the ball through the plane
  - Technical foul
- 3) Defender contacts any part of the inbounder's body on the other side of the line or on the other side of the plane before the pass is completed
  - Intentional Foul
- *Remember: Defender contacts the ball on the other side of the plane or contacts the hand on the ball on the other side of the plane*
  - *Nothing – play on*



## Inbounding Review (Inbounding Team)

### Violation

- If inbounding pass is not legally completed (for any reason)
  - Defending team gets designated spot throw-in at same spot

### Team Control

- Team control only in applies in situation involving foul by inbounding team
  - Offensive foul is result

### Airborne Exception

#### (& Exception to the Airborne Exception)

- Player from same team can jump from frontcourt and catch pass directly from inbounder and land in backcourt legally
- Can land with one foot in front court then one foot in back court
- *Remember: If defender tips the ball, the inbound pass is considered complete, and the airborne exception no longer applies*



## TRAIL-Blazing

- **Backcourt (2 or 3 person):**
  - Always trail/shepherd the action – 5' back @ optimum angle
  - Responsible for all throw-ins in backcourt
  - Initiates 10 second count in boys' games
  - Primarily responsible for backcourt violations
- **Frontcourt:**
  - Work from the 28 foot mark as your base of operations
  - Be able to see the number on the front of the defender's jersey
  - (2 person) Don't be afraid to get on the court and work the arc
  - (2 person) Step DOWN on shots, not out
  - (3 person) Be aware of rotations
  - (2 and 3) Always stay engaged to help with rebounds



# Training/Evaluation/Testing

## Quick Hits!

- ▣ Errors:  
Correctable v Scorebook  
v Timing
  - Definitions of each
  - What to do
- ▣ Uniform Rule
  - Just 2 components:
    - 1) *Undershirt* = jersey color
    - 2) *Everything else* = 1 color
  - white, black, beige, or **uniform color** -- for all players on the team ("all for 1 and 1 for all")
- ▣ Disqualification Sequence
  - 15 seconds to replace
  - No horn necessary if coach is flying a replacement in
  - If not, have the horn sounded right away, then give instruction for 2<sup>nd</sup> horn at 15 seconds
  - Use common sense
  - Bench conduct warning does not come into play here
- ▣ Anthem Advisory
  - For players
  - For officials



# Training/Evaluation/Testing



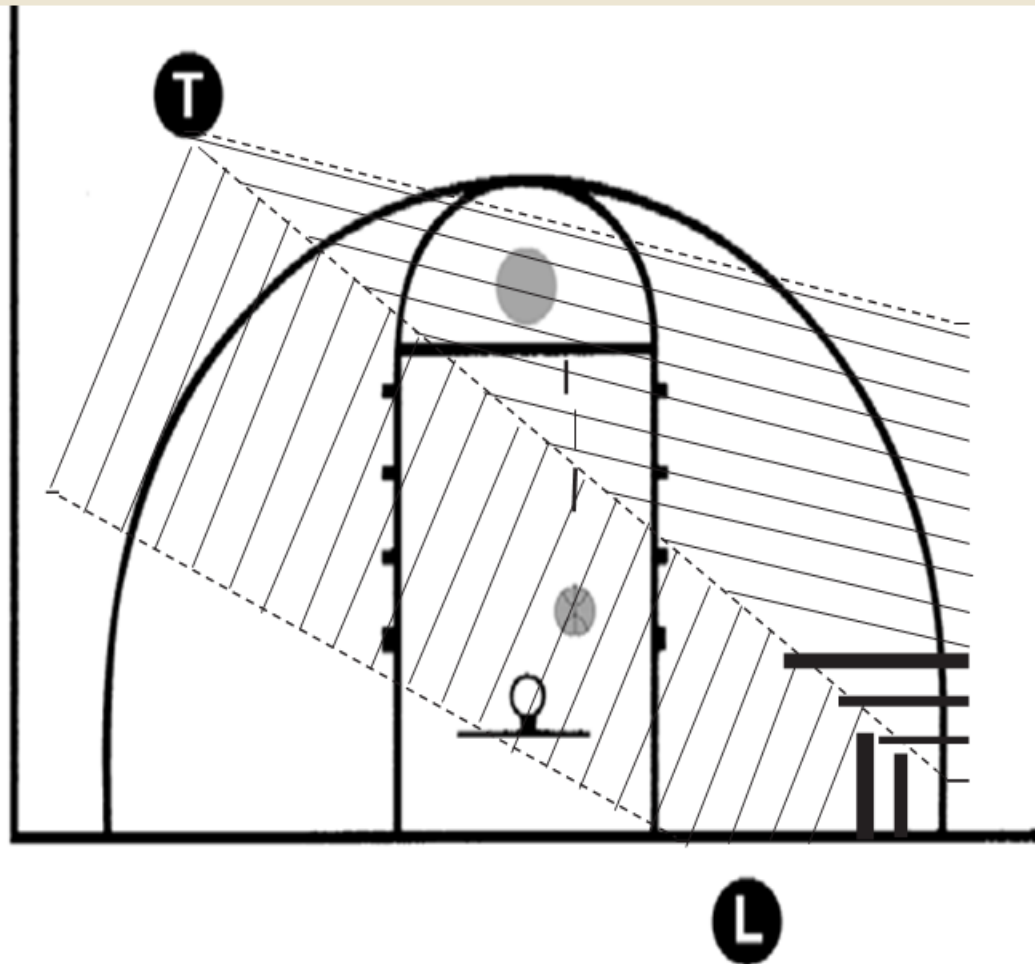
## Mandatory In-season “Video Quizzes”

First Quiz available on Arbiter Tuesday, 11/14  
(you can open the Quiz in Central Hub view)

You have until 12/15 to complete



## Free Throw Areas of Coverage



# Critical Success Factors



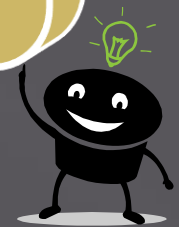
*Self-respect*

*Respect for  
players*

*Goals*

*Respect for  
Coaches*

*Respect for your  
organization you  
represent*





# Association Administration

- School Directory, Member info and Incident Reporting



## Administration framework - know these support tools

- ArbiterSports
- [www.arbitersports.com](http://www.arbitersports.com)

- Assignments and Game details
- Partners contact info
- Member info - phone, email, home address

- Local Association info and bulletins
- [GGOB.net](http://GGOB.net)

- Membership and Board info
- School Directory
- Incident Report PLEASE call or email if you are submitting a report

- California Basketball Association
- [www.CBOA.net](http://www.CBOA.net)

- Study materials
- Lesson Plans
- Certification Testing



# Wrap-up and Next Steps



**Thank you for your time, attention and passion**

- **Any open questions?**
- **Review ArbiterSports often**
- **Availability accuracy is key**
- **Get into the Rule Book**

**Scrimmages have already started  
Need Help  
on 11/14 & 11/18 – “Game ON”!!**

