



2023/2024 SEASON
WELCOME!

Agenda

- **Members**
- **Game Fees**
- **Pay Dates**
- **CBOA Educational Material/Testing/**
- **Rules /Training/Videos**
- **Points of Emphasis**
- **Wrap up and next Steps**



Members



<ul style="list-style-type: none">• Years of Service and New Members	<ul style="list-style-type: none">• Please raise your hands!



Game Fees



VVAL 3-Person, All leagues same rate

- | | |
|--|--|
| <ul style="list-style-type: none"> VVAL
(NEW this year 3-person League) | <ul style="list-style-type: none"> Varsity \$90 JV \$83 FROSH \$80 All NBL/VVAL games are 8 minutes |
| <ul style="list-style-type: none"> MCAL Assignments | <ul style="list-style-type: none"> Varsity \$90 JV \$83 FROSH \$80 Frosh games are 7 minutes |
| <ul style="list-style-type: none"> NBL Assignments | <ul style="list-style-type: none"> Varsity = New Fee \$90 Old \$81 JV = New Fee \$83 Old \$73 FROSH = New Fee \$80 Old \$70 All NBL/VVAL games are 8 minutes |
| <ul style="list-style-type: none"> Travel FEES | <ul style="list-style-type: none"> All leagues \$10 Travel Fee MCAL: \$10 Bridge Fee reimbursement |



Payment process – pay four (4) times in the season



Payment process overview

- | | |
|----------------|--|
| • Frequency | <ul style="list-style-type: none">• <u>Dec. 10th</u> and 31st• Jan. 19th• Feb. 29th (end of season check) |
| • Method | <ul style="list-style-type: none">• Hard-copy checks mailed to addresses in Arbiter and Bill Pay• Non-descript white envelope |
| • Game details | <ul style="list-style-type: none">• Review Arbiter for game details that will reconcile to the game fee check amount• Any “Turn-back” fees will also be shown• CBOA dues \$80 will be deducted in January check(NASO insurance, books, referee magazine) |
| • Dues | <ul style="list-style-type: none">• GGOB dues \$80 will be deducted in final check• If this is your first season, all dues will be due in first check |

❖ Form 1099's to be issued for all those earning over \$600 in 2023, mailed to Official in Feb/Mar 2024



Schedules

- Heavy tourney weekends
- All levels, both genders

- Many of the same schools have teams playing concurrently at different sites
- Admin support to be spread thin

Scrimmages: with about 3/4 of all schedules in

Currently 70 games, primarily on Saturdays
11/11/23 and 11/18 with several also during weekdays

Tournaments: with about 3/4 of all schedules in
Weekend of 11/30 - 12/2

(6) 8-team tournaments Thursday, Friday & Saturday

Weekend of 12/7 - 12/9

(8) 8-team tournaments Thursday, Friday & Saturday

Weekend of 12/14 - 12/16

(3) 8-team tournaments Thursday, Friday & Saturday

Week of 12/27 - 12/30

(4) 8-team tournaments Thursday, Friday & Saturday

(2) 16-teamer

- League start dates vary

League Start Dates:

MCAL - January 3, 2024

NBL - December 12, 2023

VVAL - January 3, 2024



GGOB Organization

Sonoma/Marin/Napa games



GGOB service areas include:

Location	Leagues/Schools	Levels/Team Counts
<ul style="list-style-type: none"> Marin 	<p>MCAL</p> <p>BCL San Domenico, Marin Academy, NBCA</p>	<ul style="list-style-type: none"> 9 MCAL schools each playing only (8) league games starting in January
<ul style="list-style-type: none"> Sonoma 	<p>NBL (Oak and Redwood)</p> <p>Boys and Girls from same school may play in different Division</p> <p>NBL Division Grid on GGOB.net</p>	<p>12 – NBL teams</p> <p>Boys Oak (7) Boys Redwood (5)</p> <p>Girls Oak (5) Girls Redwood (7)</p> <p>4:30/ 6:00/ 7:30</p>
<ul style="list-style-type: none"> Sonoma/Napa 	<p>VVAL</p> <ul style="list-style-type: none"> Napa, Vintage, American Canyon Justin Siena, Casa Grande, Petaluma, Sonoma Valley 	<p>7– VVAL teams</p> <p>Single division with Bye each play-date</p> <p>4:00 / 5:30 / 7:00 Start times</p> <p>Similar format to MCAL;</p> <p>JV at 4:00, followed by GV & BV</p>

Assignment process – tools and approach



ArbiterSports is the source for Game assignments

- | | |
|---------------------------------------|---|
| • Cancelled Games due to Covid | <ul style="list-style-type: none">• It is still possible that your game will be cancelled due to COVID• Officials will not be paid if game is cancelled by noon day of game |
| • Assigning | <ul style="list-style-type: none">• Will assign when league schedules are final• Heavy Scrimmage days are November 11th and 18th |
| • MCAL/VVAL/NBL Assignors | <ul style="list-style-type: none">• Tim Dalton/Nancy Clary |
| | |
| | |



Training and Evaluation – tools, approach and Observer staff



Training and Evaluation – critical success factors

<ul style="list-style-type: none">• Tools	<ul style="list-style-type: none">• CBOA online Rules Test “A”• CBOA study material (hard copy)• In- Person Study Groups (TBA)• <i>In-season</i> video reviews/Quizzes
<ul style="list-style-type: none">• Four (4) elements to determine quality of assignments and Play-off selection	<ul style="list-style-type: none">• Meeting Attendance (next is virtual)• Test score/In-season Video results• Scrimmage attendance (3 required)• On-court Evaluations
<ul style="list-style-type: none">• Observer staff	<ul style="list-style-type: none">• Maintain significant Association investment• Veterans not working in our Group• Guaranteed one written evaluation per season



Online Test



CBOA Online test

- | | |
|--|---|
| <ul style="list-style-type: none">• October 15th – Nov 12 testing “window” | <ul style="list-style-type: none">• Online review of key points, plays, quizzes• Can be done at any time within this period• Can work in group, but individual log-on is required to track “attendance” and certification hours |
| <ul style="list-style-type: none">• Rule Books/CBOA Material• Log in to CBOA now to make sure your password is correct! | <ul style="list-style-type: none">• Distributed at in-person meetings |





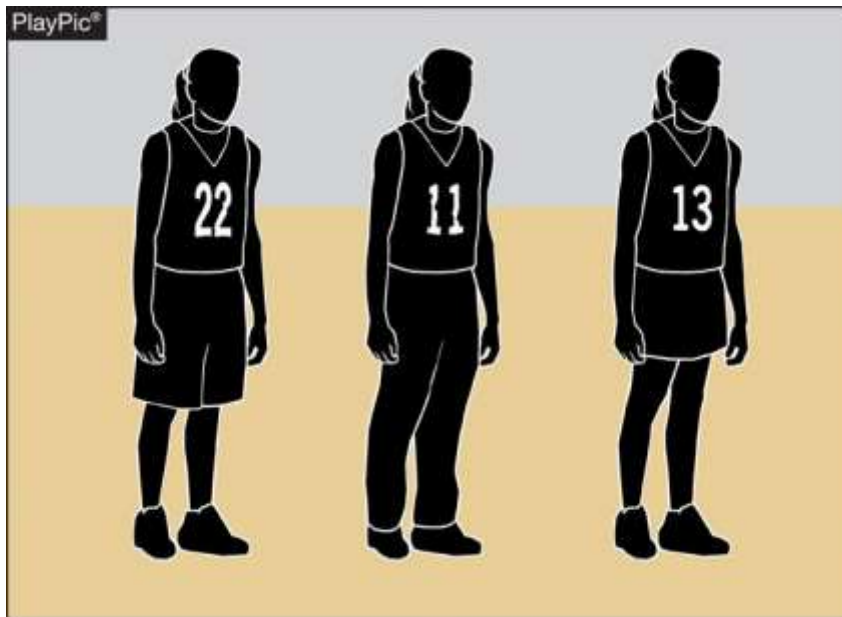
Rules Changes

2023-24 NFHS BASKETBALL



UNIFORMS

3-4-5



- Teammates may wear multiple styles of uniform bottoms including shorts, skirts or pants, so long as they are like-colored.
- Not all team members need to wear the same style.
- However, all styles must meet uniform requirements for visible manufacturer logos and trademarks.

TEAM MEMBER'S EQUIPMENT, APPAREL 3-5-6



- If the visiting team is wearing undershirts with their dark jerseys, the undershirts may now be a single solid color similar to the torso of the jersey or solid black.

TEAM MEMBER'S EQUIPMENT, APPAREL 3-5-6



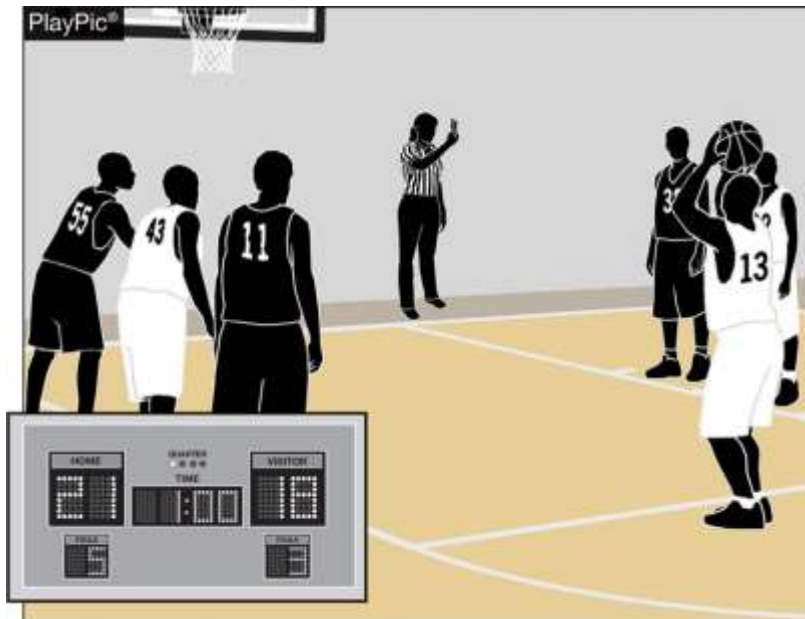
- Team members in this PlayPic may wear either solid black or solid red undershirts, but players on the same team cannot wear both.
- If players choose to wear an undershirt, all undershirts must be the same color.

UNIFORMS, EQUIPMENT AND APPAREL



- Arm sleeves, knee sleeves, lower leg sleeves, compression shorts and tights are permissible.
- Anything worn on the arm and/or leg is a sleeve, except a knee brace, and shall meet the color restrictions.
- Sleeves/tights and compression shorts shall be black, white, beige or the predominant color of the jersey and the same color shall be worn by teammates.
- All sleeves/tights and compression shorts shall be the same solid color and shall be the same color as any headband or wristband worn.

BONUS FREE THROWS 4-8-1



- Two free throws will now be awarded for all common fouls, except for a player-control foul or team-control foul, beginning with the fifth team foul in each quarter.
- Team fouls will be reset to zero at the end of each quarter, excluding the fourth quarter if an overtime period is needed.



S4.1.1 Rule: Throw-In Administration

- When an official administers a throw-in to the wrong team, the officials may now rectify the mistake at any time before the first dead ball after the ball becomes live unless there is a change in possession.
- After the ball becomes dead or the correct team gains possession, the time to correct the mistake has expired.



RESUMPTION OF PLAY PROCEDURE, THROW-INS 7-5-2 thru 4 (NEW)

- After a violation or a foul before the bonus is in effect by either team or any other stoppage in play, the throw-in location will be determined by the location of the violation/foul or the location of the ball when the stoppage occurs:
 - **Frontcourt throw-in** – one of the newly established four designated spots (28-foot mark along each sideline or 3-feet outside the lane line along the end line).
 - **Backcourt throw-in** – the designated spot nearest the foul, violation or other stoppage.



RESUMPTION OF PLAY PROCEDURE, THROW-INS [7-5-2 thru 4 (NEW)]



NOTE: Court markings are **not** required.

- **Frontcourt throw-ins** – Officials shall determine the throw-in spot by using an imaginary line (dotted line).
 - If the stoppage of play occurs inside the dotted imaginary line, the spot shall be the nearest point on the end line 3-feet outside the lane line.
 - If the stoppage of play occurs outside the dotted imaginary line, the spot shall be the nearest 28-foot mark along each sideline.



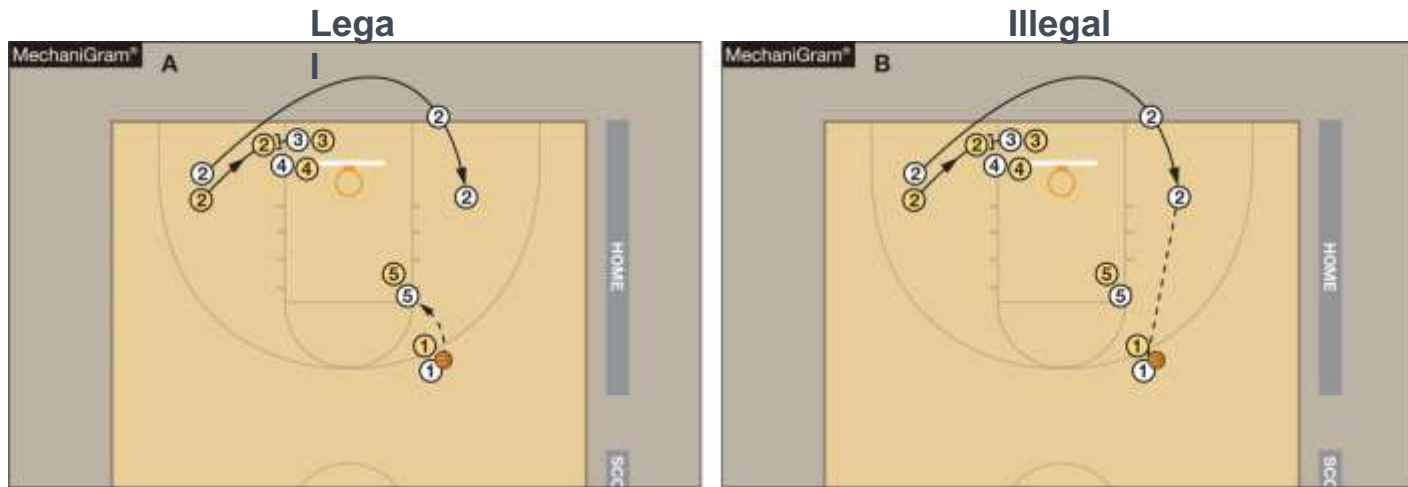
THROW-INS — PROPER LOCATIONS



- Proper inbound spots contribute to the overall flow and fairness of the game.
- Coaches design specific plays and strategies based on where the ball will be put in play.
- It is therefore essential for game officials to be diligent in administering the ball at the proper throw-in location.
- Any time a team causes the ball to go out of bounds, the throw-in occurs from the spot where the ball went out of bounds.

OUT OF BOUNDS

9-3-3



- A player may now step out of bounds as long as the player is not the first player to touch the ball, or the player did not step out of bounds to avoid a violation (MechaniGram A).
- Any player who steps out of bounds under the player's own volition and is the first player to touch the ball after returning to the playing court or does so to avoid a violation has committed a violation (MechaniGram B).

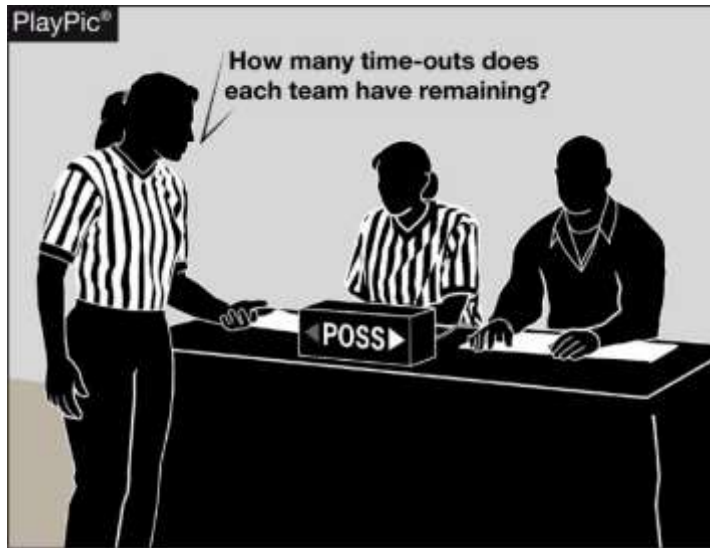


Points of Emphasis

2023-24 NFHS BASKETBALL



END-OF-GAME PROTOCOLS



- As a game nears the end of playing time, officials need to remind each other of the game-ending procedures to prevent potential issues.
- Late-game time-outs provide the best opportunities to:
 - Confirm scorebook accuracy with the scorer, the number of time-outs remaining for each team and the number of team fouls/impact on the bonus.
 - Remind the timer to watch officials for clock-start and clock-stop signals and be prepared to assist in aiding officials regarding whether a last-second shot was released prior to the end of time.

END-OF-GAME PROTOCOLS



- During late-game time-outs the officials should discuss the following among the crew:
 - Last-second shot responsibility.
 - Unless the ball is tapped, no try can be attempted on a throw-in or free throw with .3 seconds or less remaining.
 - Intentional/flagrant fouls are two shots and a designated spot throw-in.
 - If a foul occurs as the game-ending horn sounds and the score can be tied or the game won by the ensuing free throws, the official must administer the free throws. If they will not change the outcome, they shall not be attempted.

END-OF-GAME PROTOCOLS



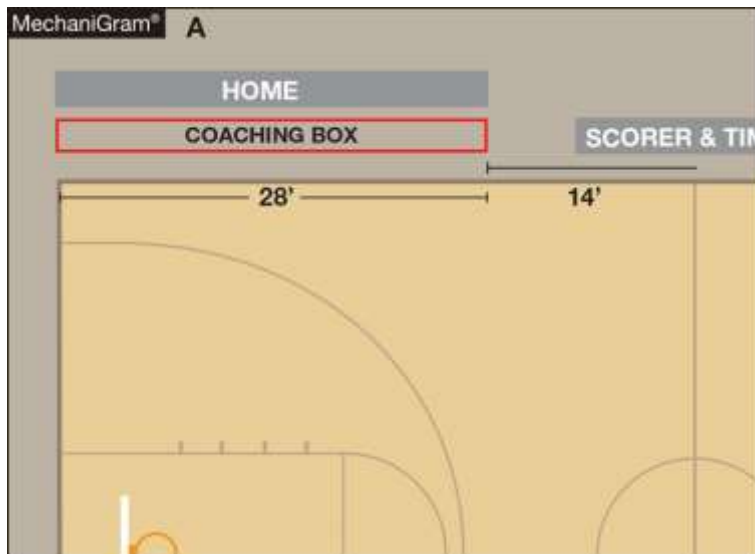
- If the score is tied at the end of regulation time, inform each team and the table officials of the overtime procedures (length of overtime period, additional 60-second time-out, etc.).

END-OF-GAME PROTOCOLS

- Following the game-ending horn, the referee should confirm with the scorer that everything is correct, then leave the floor with their partner(s).
- In situations when the score is separated by three points or less, it may be necessary to verbally confirm with the scorer.
- In games when the margin of victory is larger, a visual signal such as a thumb's-up will suffice.
- Be confident everything is correct, as the officials' jurisdiction ends when the entire crew leaves the visual confines of the playing court.



BENCH DECORUM



- Through the enforcement of existing rules, coaches and bench personnel are expected to exhibit appropriate and acceptable behaviors.
- Coaches are expected to remain in the coaching box.
- Coaches who go beyond the 28-foot line, or more importantly onto the playing court, gain a distinct advantage that is not within the spirit or intent of the rules.

BENCH DECORUM



- While the bench area expands during a time-out, the bench area does not extend beyond the 28-foot line.
- Coaches and other bench personnel may not move to the extended bench area until the time-out begins to ensure bench personnel do not create inadvertent contact with opposing players still on the playing court.
- Coaches who leave the expanded bench area to engage officials inappropriately are subject to a warning or bench technical foul.



SPORTSMANSHIP

- CIF Bylaw 503 Section M Article 9
 - Spectator: If a spectator is ejected from a contest, it is the responsibility of the school to ensure that person does not attend the team's next contest. If the same spectator is ejected a second time, it is the responsibility of the school to ensure that person does not attend any of the remaining contests for that season.
- Protocol:
 - Identify the spectator to the school administrator
 - Report the ejection to the unit leader with as much detail as possible
 - Unit leader reports the ejection to Executive Director and/ or the Section Commissioner





CIF Guidelines on Touching Players

- We do not under any circumstances touch a player!
- If a fight breaks out during your game, we are not to get involved.
 - Do not get between players that have already started pushing or punching
 - Do not pull players away from each other
- Our job is to stay back and take notes
 - Let the coaches address their players if need be
 - Make sure that you are vigilant in who was involved and who came off the bench
- Officials will be suspended for contact with players

Facebook resources

Some good Facebook groups for videos and rules info:



- ▣ NFHS - Basketball Officials
- ▣ NFHS – Basketball Officiating

Search for these groups on Facebook, and “like” (or follow) them. You will start to see videos with rulings, and rules discussions. Read them thoroughly...sometimes people give the wrong answers. But you will start to see who the moderators are...state championship level and college officials, along with NFHS staff and related personnel, and **their** answers are solid.

Yes, I know these look alike. But they are two different Facebook pages, with similar formats and ways of operating. There are some other good pages out there, but they mix various levels of rules. These are HS only.

Training and Evaluation – tools, approach and Observer staff



Training and Evaluation –

- **Tools**

- CBOA material In season Videos and short quizzes

- **Try on your uniform**

- Make sure it fits
- Get in shape now, the season starts in less than one month.

- **Observer staff**

- Observers in all three leagues
- Maintain significant Association investment
- Veterans not working in our Group



Association Administration

- School Directory, Member info and Incident Reporting



Administration framework

- know these support tools

- | | |
|--|---|
| <ul style="list-style-type: none">• ArbiterSports• www.arbitersports.com | <ul style="list-style-type: none">• Assignments and Game details• Partners contact info• Member info – phone, email, home address• Video quiz and content review |
| <ul style="list-style-type: none">• Local Association info and bulletins• GGOB.net | <ul style="list-style-type: none">• Membership and Board info• School Directory• Incident Report |
| <ul style="list-style-type: none">• California Basketball Association – new login• www.CBOA.net | <ul style="list-style-type: none">• Study materials |





Wrap-up and Next Steps



Thank you for your time, attention and passion

- | | |
|---|---|
| <ul style="list-style-type: none">• Any open questions? | <ul style="list-style-type: none">• Review ArbiterSports often• Availability accuracy is key• Get into the Rule Book |
| <ul style="list-style-type: none">• CBOA Test "A" | <ul style="list-style-type: none">• Test emailed and available this week.• Test due on November 12th• Study Groups announced this week |
| <ul style="list-style-type: none">• Next formal meetings will be held virtually via Zoom | <ul style="list-style-type: none">• Meeting start date: Nov 6th, 6:00 PM |

**Early heads-up
Nov. 11 and 18 HEAVY
scrimmage days**